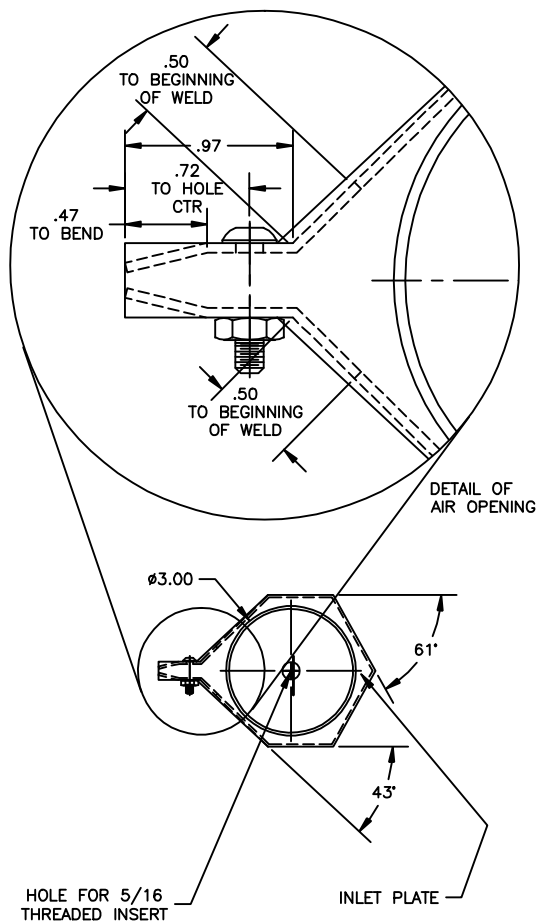
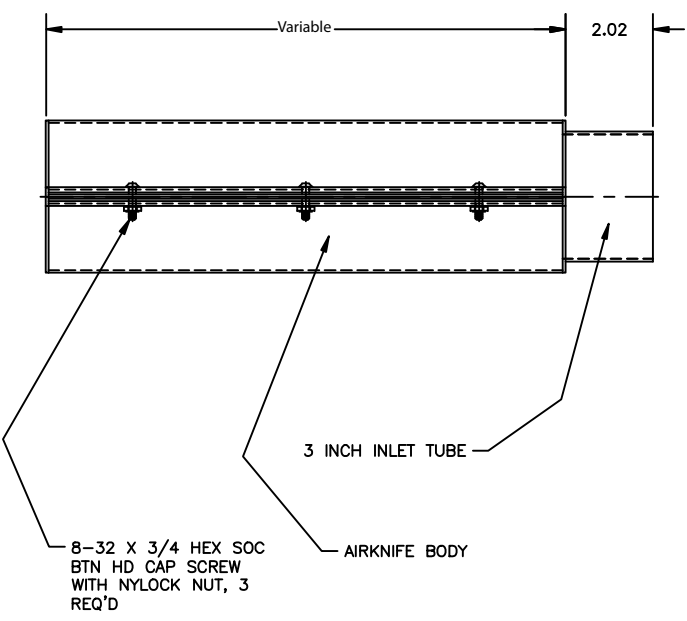
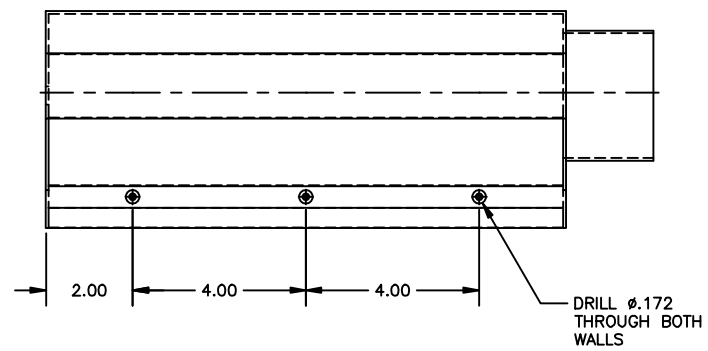
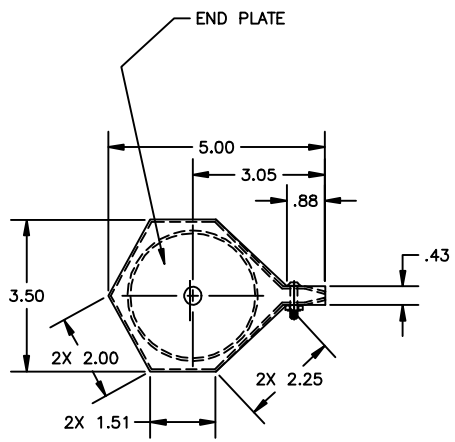


REVISIONS				
ZONE	REV	DESCRIPTION	DATE	APPROVED



- NOTE:
1. MAT'L FOR PLATES AND INLET TUBE = .065 WALL 316 SS
 2. MAT'L FOR BODY = 16 GA SS
 3. WELD PLATES TO BODY ALL AROUND EXCEPT AIR OPENING AS INDICATED,

TOLERANCES		TITLE	
.XX = ±.01	.XXX = ±.001	3 INCH AIRKNIFE ASSEMBLY	
ANGLES = ±.01°		MIDWEST AIR TECHNOLOGY	
SCALE FULL	SHEET SIZE A	DATE 10/3/2006	DWG NO. 1008
			REV